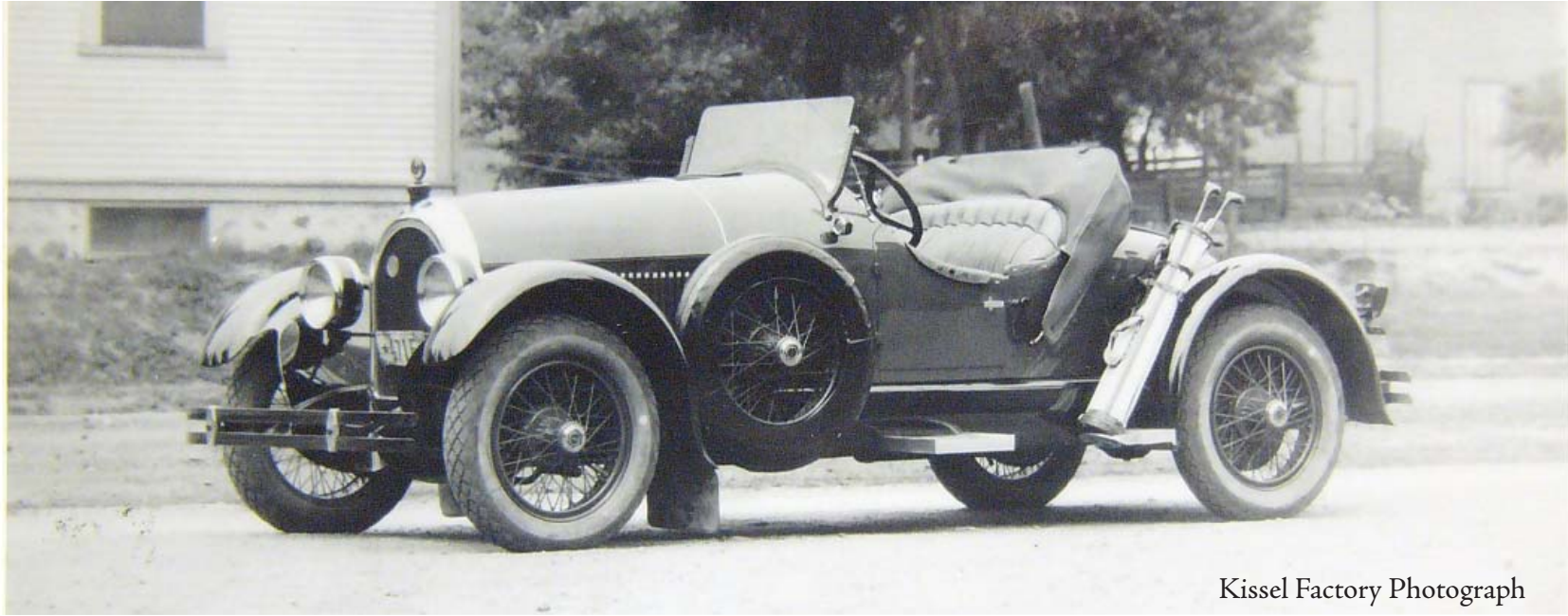


1924 Kissel 6-55 Speedster



Kissel Factory Photograph

1924 — Sold to *Fred Shuffener* (saw mill owner) by Bryne Motor Company, Rockhampton, QLD (Australia); Total 1924 production 748 cars, 55 trucks; ~155 Speedsters; Chrome yellow Speedster popularly known as a “Gold Bug”

1940 — This car chopped to make “ute” (farm utility vehicle)

1962 — Rescued from farm in Jambin, QLD (Australia)

2005 — Purchased in Sydney, NSW (Australia) and shipped to Oakland, California by *Lynn and Jeanne Kissel*

Manufactured by the

Kissel Motor Car Company

Hartford, Wisconsin (1906-1930)

Famous “Gold Bug” Owners — *Fatty Arbuckle, Ralph DePalma, Eddie Duchin, Amelia Earhart, Douglas Fairbanks, Greta Garbo, William S. Hart, Al Jolson, Mary Pickford, Rudy Vallee*

Rear deck and exterior paint – *Kevin Schell, California Reflections*; Interior – *Dino Palermo, Fowler’s Upholstery*; Wheels – *Maas Bros*; Clock – *Nile Godfrey, Classical Clocks & Antiques*; Silver plating – *Monsen Plating & Silversmiths*; Nickel plating – *Johnson Plating Works*; Waterpump – *Jerry Washburn*

Owned by

Lynn and Jeanne Kissel

Livermore, California