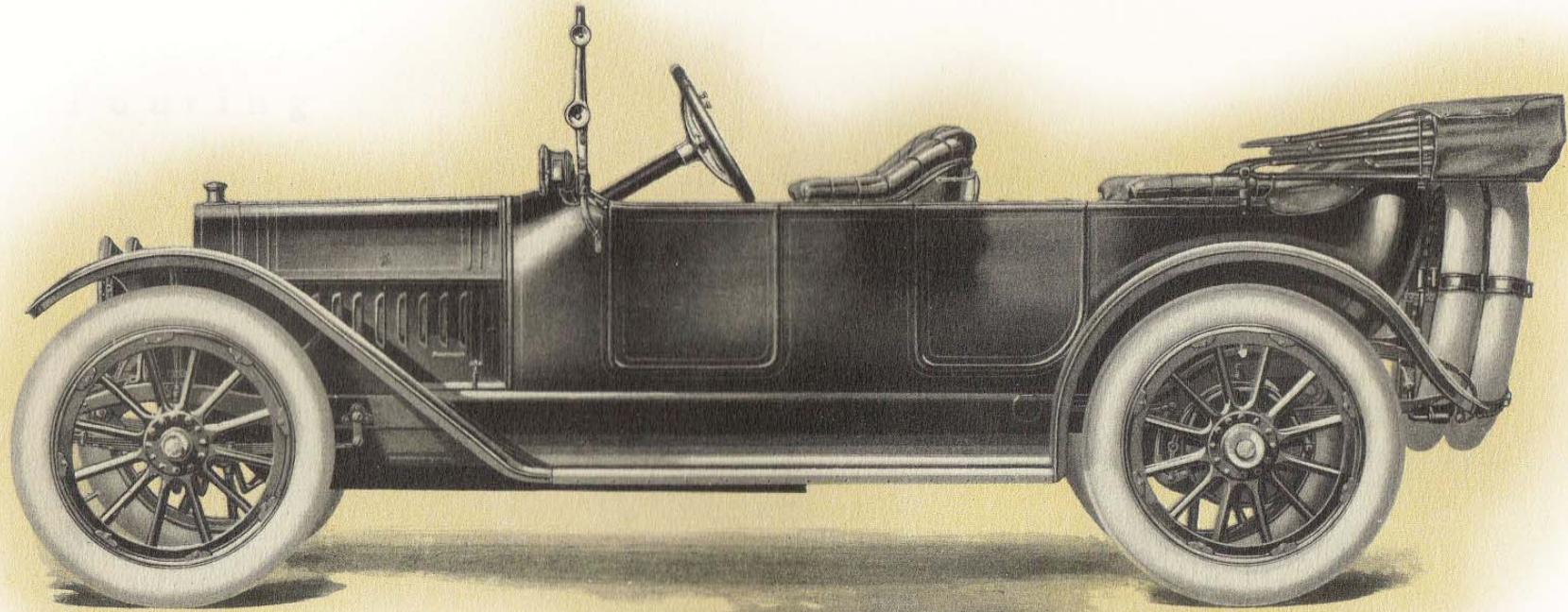


# 1914 KisselKar 40 "Four" Touring



---

\$1850 f.o.b. factory (equivalent to about \$85,000 today)  
121" wheelbase; 35"x5" tires; semi-elliptical leaf spring suspension  
Selective sliding gear, four-speed (overdrive) transmission  
4 1/2" bore x 5 1/4" stroke, 40-hp 4-cylinder 334-cid engine;  
cylinders cast in pairs; Lunkenheimer fuel pump  
6V lights; 12V electric starter; Esterline E-6 dynamo/generator;  
dual Bosch DU-4 magneto, coil ignition; "return earth" system

---

Manufactured by the

**Kissel Motor Car Company**

Hartford, Wisconsin (1906-1930)

---

1914 is first year for: all electric lights; indirect dashboard illumination (industry first); left-hand drive; "Center Control" (center transmission and park brake controls)

One of three extant 1914 Kissel 4-40 cars; 300 produced  
Purchased in 2008 from the estate of E. Ann Fisher-Klein;  
low mileage, thought to have only 6,900 original miles

For more information, visit our website — <http://starship.org>

---

Owned by

**Lynn and Jeanne Kissel**

Livermore, California